The background of the lower half of the page is a blue-tinted image. On the left, a close-up of a thermal camera lens is visible. In the center and right, there are abstract digital graphics, including a wireframe sphere and a line graph with square and triangle markers, suggesting data analysis and monitoring.

THERMAL CAMERAS

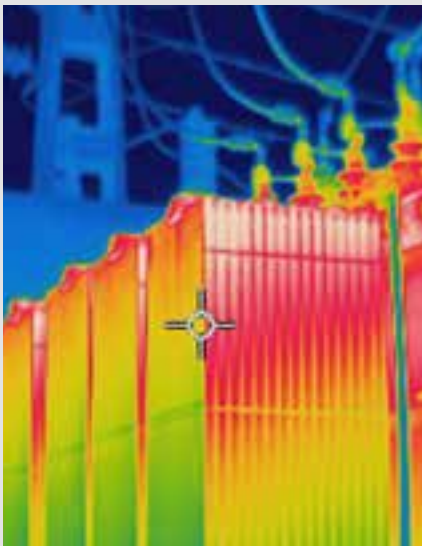
FOR REAL-TIME CONDITION MONITORING

What can be seen, can be believed quickly!

In today's competitive Industry 4.0 landscape, ensuring the optimal performance and safety of electrical assets is paramount. While traditional sensors and data loggers are crucial for predictive maintenance, securing budgets for their implementation can be a tiring and lengthy process.

However, monitoring the conditions of machines, installations, and areas is now possible with thermal imaging cameras. These cameras allow you to capture images or measure temperatures in real-time across multiple machines, installations, or large terrains. With their advanced technology, thermal imaging cameras have become widely accepted and easily approved.

Why is Temperature Measurement necessary in Condition Monitoring?



Temperature measurement plays a crucial role in the effective condition monitoring of electrical assets across various industries. Providing real-time thermal data enhances operational efficiency, safety, and cost savings by detecting issues early and extending equipment life. Without proper temperature monitoring, potential problems such as overheating, insulation failure, or equipment degradation can go unnoticed, leading to unexpected breakdowns, costly repairs, and unplanned downtime. Additionally, the lack of timely intervention can pose significant safety risks, including fire hazards and electrical faults. By incorporating comprehensive temperature monitoring, businesses can proactively address these issues, ensuring the longevity and reliability of their electrical assets.

Industries We Partner



Electrical Power Generation
and Distribution



Oil & Gas Industry



Manufacturing and
Industrial Processes

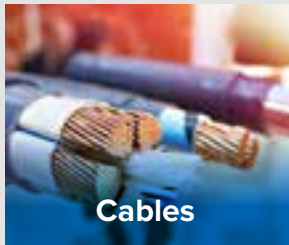


Building and Facility
Management



What can be monitored?

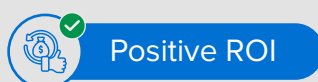
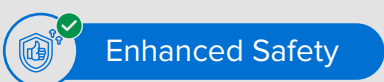
Electrical Assets Where Temperature Takes Control

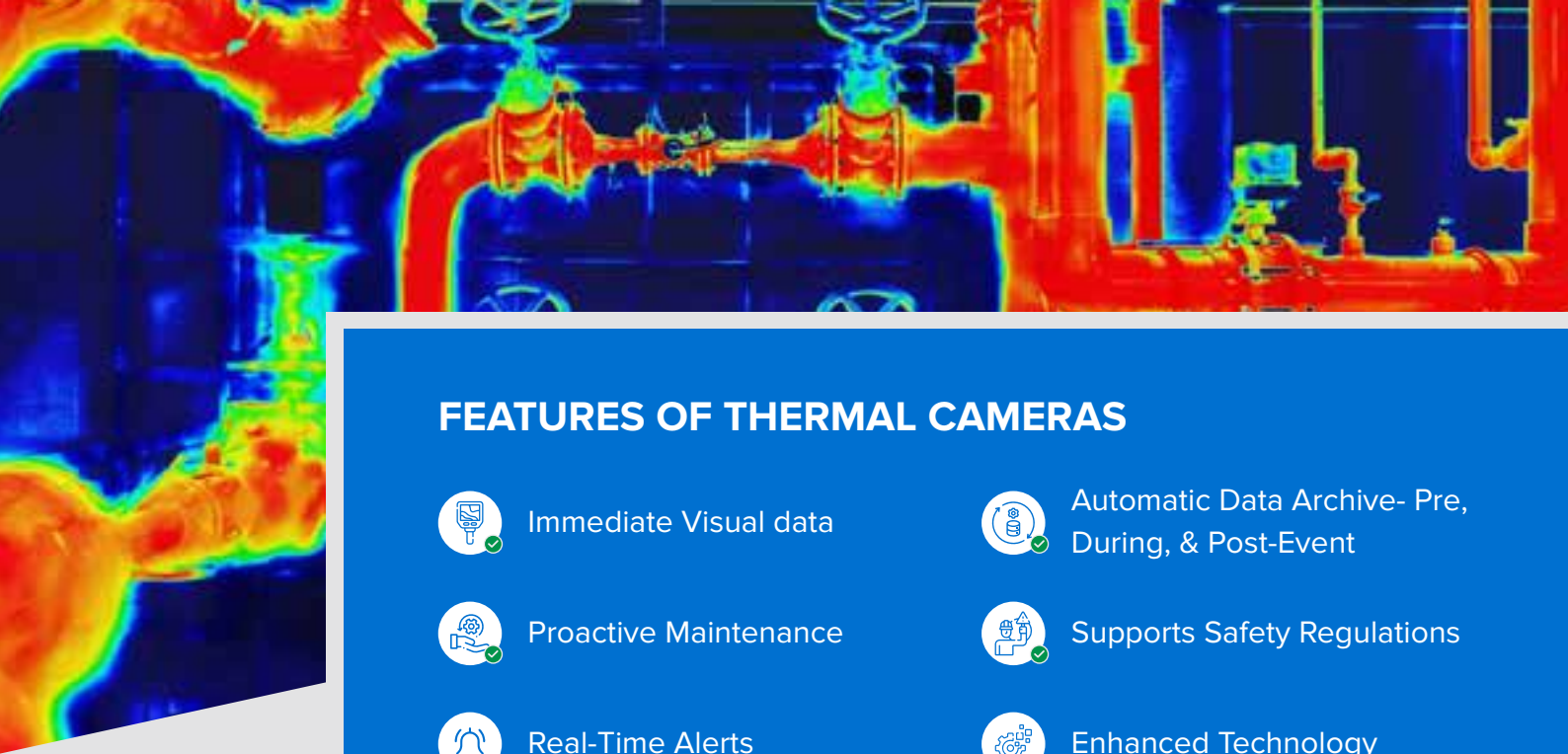


Why are organizations moving towards Thermal Cameras rather than Traditional Condition Monitoring Devices?






Competitors offering condition monitoring devices often rely on complex data analysis which delays the justification process. Rugged Monitoring's analytics-powered thermal cameras bridge the gap by providing immediate visual insights that simplify decision-making.

This translates to a stronger case for:





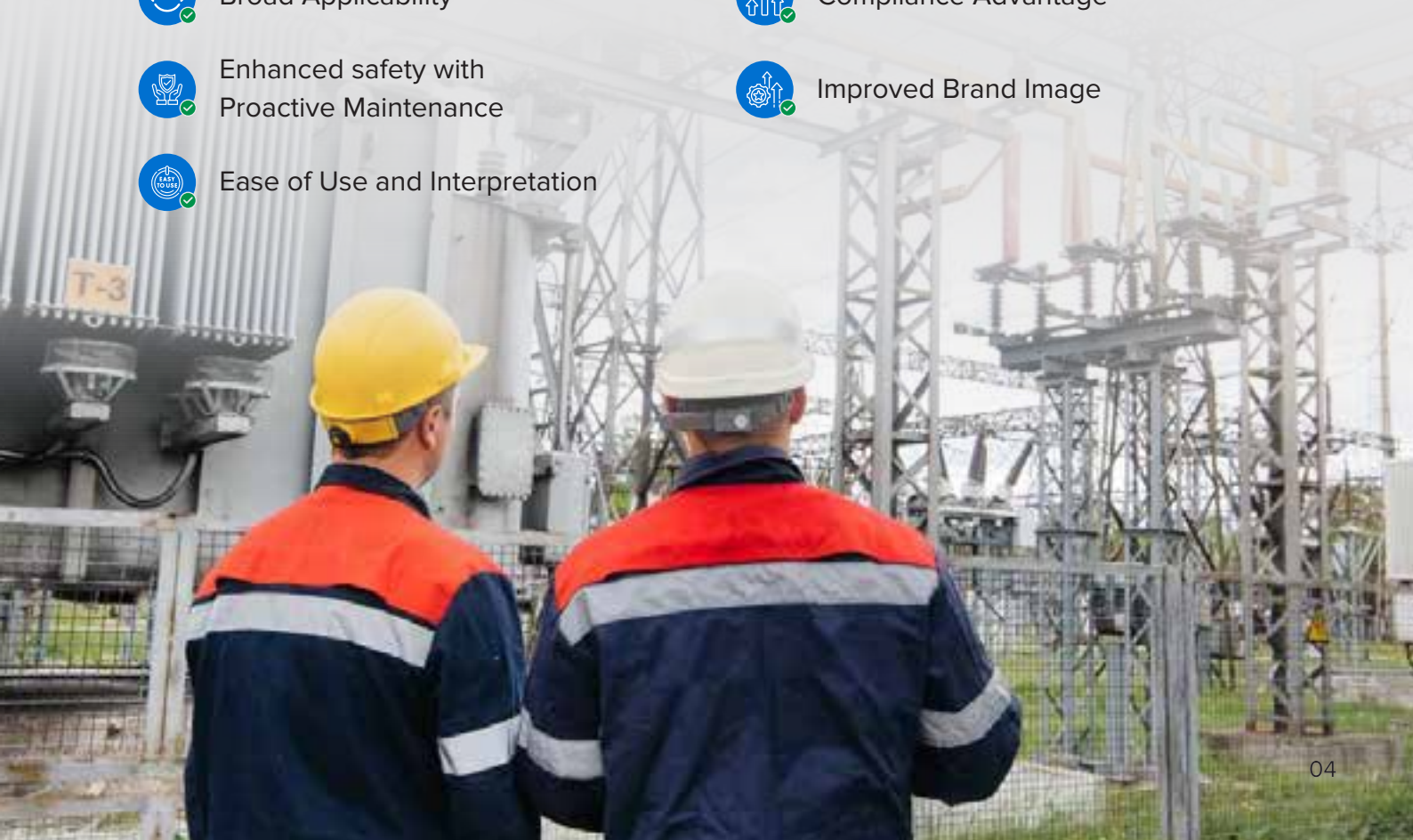


FEATURES OF THERMAL CAMERAS

-  Immediate Visual data
-  Proactive Maintenance
-  Real-Time Alerts
-  Early Detection of Hotspots
-  Automatic Data Archive- Pre, During, & Post-Event
-  Supports Safety Regulations
-  Enhanced Technology
-  Faster Troubleshooting and Root Cause Identification

BENEFITS OF THERMAL CAMERAS

-  Immediate Visibility and Stakeholder Buy-In
-  Broad Applicability
-  Enhanced safety with Proactive Maintenance
-  Ease of Use and Interpretation
-  Cost Justification and ROI
-  Compliance Advantage
-  Improved Brand Image



Scenarios Where Thermal Imaging Cameras Can Accompany Condition Monitoring



Real-Time Monitoring

For real-time alerts, ensuring prompt responses to exceeded temperature thresholds while monitoring Transformers and Switchgear.



Fault Detection

Faults in defective insulators, damaged conductors, and fault connectors can be identified early on to prevent further damage and ensure the reliability of the electrical distribution system.



Energy Efficiency

Identify inefficiencies such as imbalanced loads or cooling system failures for efficient use of energy and lower operational costs.



Preventative Maintenance

Continuous monitoring data with thermal cameras allows for preventative maintenance, reducing the likelihood of unexpected breakdowns.



Early Detection of Hotspots

Indicating issues like loose connections, overloaded circuits, or failing components due to abnormal temperature rises in transformer bushings, connections, and cooling systems.



Comprehensive Documentation

Visual records of asset conditions such as maintenance logs and reports for continuous tracking of performance and health over time, aiding in the enhanced lifetime of the asset



Identifying Insulation Failures

Identify areas where insulation might be deteriorating by visually identifying uneven temperature distributions allowing for targeted inspections and repairs.

RUGGED MONITORING'S THERMAL CAMERA SOLUTION

Rugged Monitoring's thermal camera solution goes beyond just hardware. We provide analytics-powered thermal cameras that capture temperature signatures and translate them into actionable insights. This allows for real-time visibility of potential issues like overheating equipment, electrical faults, and insulation problems. Our integrated Asset Performance Management Software, RMEYE simplifies data interpretation and helps assets experts to focus on real problems rather than preparing the data.

Contact Rugged Monitoring today to schedule a demonstration of our Analytics-Powered Thermal Cameras and discover how they can revolutionize your approach to asset monitoring and streamline the process.



Why Customers Choose Us?

RM solution, the trusted monitoring solution for over 10000+ assets across 50+ countries. We are a leading High Value Electrical Asset Monitoring Company integrating fibre optic technology to the assets.



Attention to Detail

It's our attention to the small stuff, scheduling of timelines and keen project management that makes us stand out from the rest.



A plan for Success

Our Customers are well satisfied with the advisory services that we offer to help them with best in class technological performance and a long durable life.



Experts only

We bring in our diversified experienced team with over 100+ years of experience in Asset Monitoring



Meeting Deadlines

Work with us, and you'll work with seasoned professionals – vigilant of deadlines, and committed to exceeding client expectations.



Money Matters

We protect you against currency fluctuation with competitive and fair market prices



Rugged Monitoring Services

Rugged Monitoring provides customization of sensors, monitors & software. In addition we offer on-site commissioning services, maintenance contracts and technical support to all customers worldwide.

About Rugged Monitoring

Industry's leading team of asset condition monitoring experts with 100+ years of combined experience committed to delivering customizable solutions for challenging applications. We offer a range of reliable, high performance, customizable sensors and monitoring solutions that are immune to external influence.

Certification



ISO 9001



ISO 14001



ISO 45001/
OHSAS 18000



Lloyd's
Register



ATEX
Certification

Our Presence Across the Globe



Head Office

 **Canada**

1415 Frank-Carrel, Suite
230, Quebec, QC - G1N
4N7, CANADA

 +1-418-767-0111

Asia Pacific | India | Europe | Latin America | Middle East | North America



 ruggedmon

 info@ruggedmonitoring.com

 www.ruggedmonitoring.com

©2024 Rugged Monitoring Company. All rights reserved. Information subject to change without notice. All trademarks are properties of their respective companies, as noted herein.